

# Fabric Product Details

**PATTERN** 01384  
**COLOR** Linden

**BRAND**

**Trend**

**APPLICATION**

**Fabric**

**USES**

**Bedding, Drapery,  
Multipurpose**

**CATEGORIES**

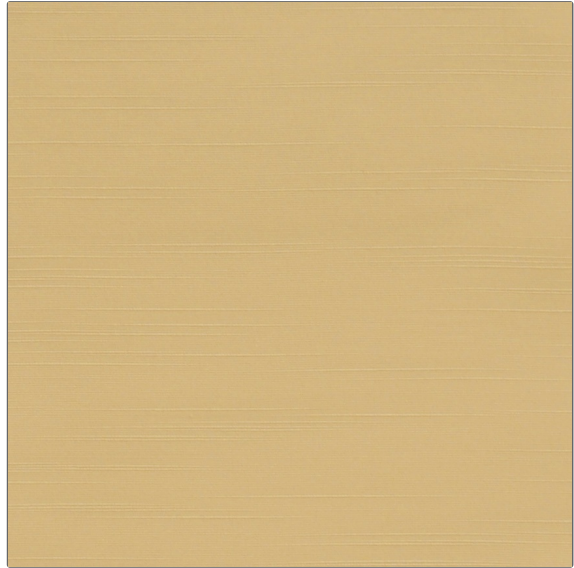
**FR-One, NFPA 701 FR,  
Solids / Small Scale  
Patterns, Eco /  
Environment Plus**

**COLORS**

**Taupe / Tan**

**DESIGN TYPES**

**Solid, Texture Plain**



**RAILROADED**

**Not Railroaded**

**WIDTH**

**58.00 in (147.32 cm)**

**VERTICAL REPEAT**

**0.00 in (0.00 cm)**

**HORIZONTAL REPEAT**

**0.00 in (0.00 cm)**

**CONTENT**

**100% Polyester Inherent FR**

**BACKING**

**FIRE CODES**

**UFAC Class I, Passes  
ASTM-E84, Passes "NFPA  
701" 1999, Passes NFPA  
260, Passes MVS 302,  
Boston Fire Test Bfd, Imo  
Ftpc Part 7 (Drapery)**

**PRODUCT NUMBER**

**0745513**

**COUNTRY**

**South Korea**

**ADDITIONAL PRODUCT NOTES**

**Oeko Tex Standard 100, Exclusive Pattern, Passes Ny / Nj Pa, Passes Faa Part 25.853, Bs 5867 Part 2 Type B & C**