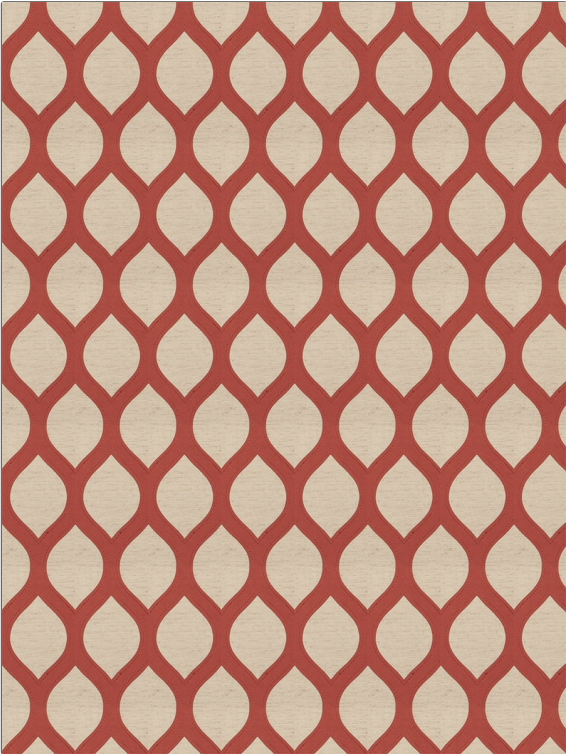


# Fabric Product Details

**PATTERN** 03983  
**COLOR** Poppy

<b>BRAND</b>	<b>APPLICATION</b>
Trend	Fabric
<b>USES</b>	<b>CATEGORIES</b>
Bedding, Drapery	Crewels / Embroideries
<b>COLORS</b>	<b>DESIGN TYPES</b>
Red	Embroidery, Contemporary / Modern, Ogee
<b>SCALE</b>	<b>RAILROADED</b>
Medium	Not Railroaded



<b>WIDTH</b>	<b>VERTICAL REPEAT</b>	<b>HORIZONTAL REPEAT</b>	<b>CONTENT</b>
52.00 in (132.08 cm)	6.00 in (15.24 cm)	3.50 in (8.89 cm)	Base: 90% Polyester 10% Linen Embroidery : 100%, Polyester
<b>BACKING</b>	<b>PRODUCT NUMBER</b>	<b>COUNTRY</b>	<b>CLEANING CODES</b>
	7516204	China	S

**ADDITIONAL PRODUCT NOTES**

Exclusive Pattern, Embroidered Textiles Are Not, Guaranteed For Precise Color, Matching And Colorfastness., Color Placement Of Embroidery, May Vary. All Measurements, Quoted For Repeats Are, Approximate.