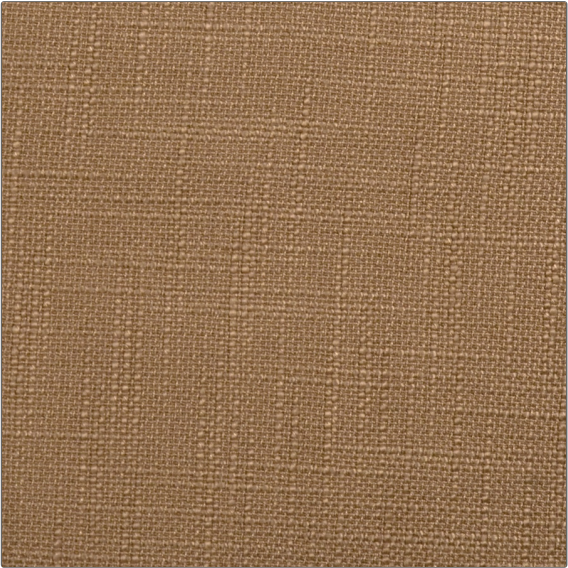


# Fabric Product Details

**PATTERN** 01676  
**COLOR** Almond



<b>BRAND</b>	<b>APPLICATION</b>
<b>Trend</b>	<b>Fabric</b>
<b>USES</b>	<b>CATEGORIES</b>
<b>Bedding, Drapery, Upholstery</b>	<b>Wovens, Solids / Small Scale Patterns</b>
<b>COLORS</b>	<b>DESIGN TYPES</b>
<b>Beige</b>	<b>Solid, Texture Plain</b>
<b>SCALE</b>	<b>RAILROADED</b>
<b>Small</b>	<b>Not Railroaded</b>

<b>WIDTH</b>	<b>VERTICAL REPEAT</b>	<b>HORIZONTAL REPEAT</b>	<b>CONTENT</b>
<b>55.00 in (139.70 cm)</b>	<b>0.00 in (0.00 cm)</b>	<b>0.00 in (0.00 cm)</b>	<b>76% Polyester 13% Cotton 11% Viscose</b>
<b>BACKING</b>	<b>FIRE CODES</b>	<b>DOUBLE RUBS</b>	<b>PRODUCT NUMBER</b>
	<b>UFAC Class I, Passes NFPA 260, Passes MVS 302</b>	<b>Exceeds 135,000 Double Rubs (Wyzenbeek Method)</b>	<b>0795915</b>
<b>COUNTRY</b>	<b>CLEANING CODES</b>		
<b>China</b>	<b>S</b>		

**ADDITIONAL PRODUCT NOTES**

Oeko Tex Standard 100, Exclusive Pattern, Eco / Environment Plus