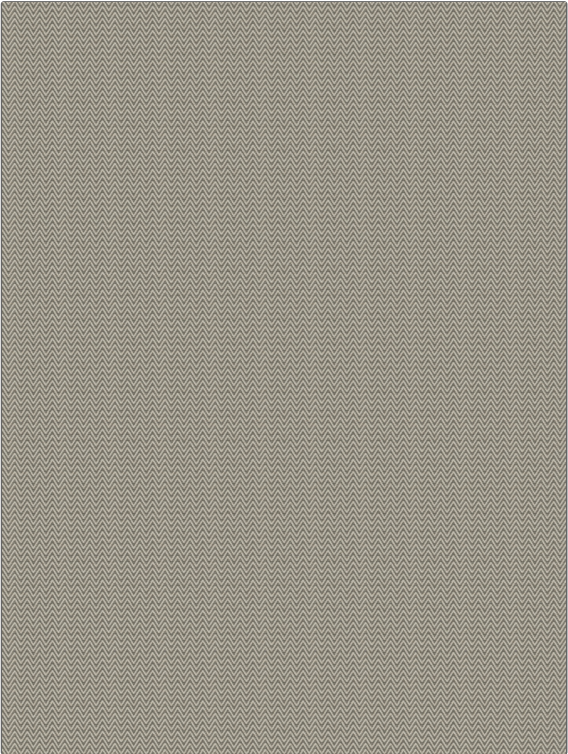


# Fabric Product Details

**PATTERN** 04219  
**COLOR** 10

<b>BRAND</b>	<b>APPLICATION</b>
Trend	Fabric
<b>USES</b>	<b>CATEGORIES</b>
Bedding, Drapery, Multipurpose, Upholstery	Wovens
<b>COLORS</b>	<b>DESIGN TYPES</b>
Grey	Herringbone, Small Scale Woven, Chevron
<b>SCALE</b>	<b>RAILROADED</b>
Small	Not Railroaded



<b>WIDTH</b>	<b>VERTICAL REPEAT</b>	<b>HORIZONTAL REPEAT</b>	<b>CONTENT</b>
56.00 in (142.24 cm)	0.25 in (0.64 cm)	0.62 in (1.57 cm)	63% Polyester, 28% Cotton, 9% Linen
<b>BACKING</b>	<b>FIRE CODES</b>	<b>DOUBLE RUBS</b>	<b>PRODUCT NUMBER</b>
	UFAC Class I / NFPA 260	Exceeds 24,000 Double Rubs (Wyzenbeek Method)	8607610
<b>COUNTRY</b>	<b>CLEANING CODES</b>		
China	S		

**ADDITIONAL PRODUCT NOTES**

Ca Tb 117-2013, Exclusive Pattern