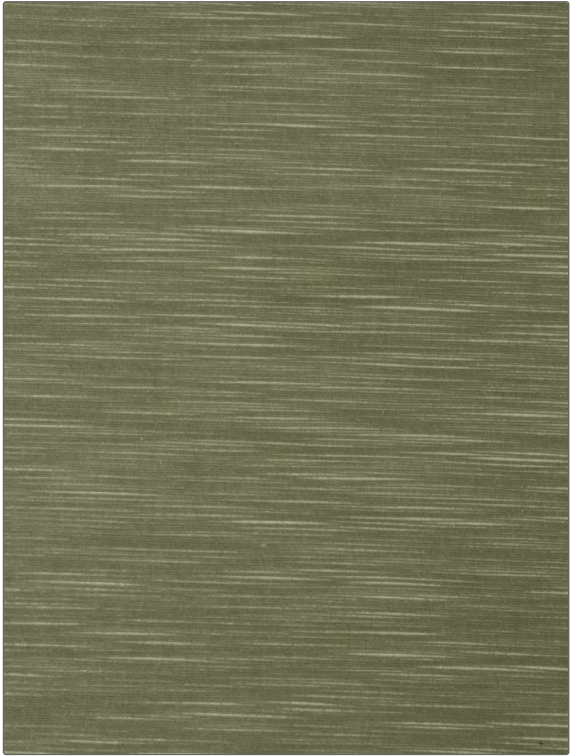


# Fabric Product Details

**PATTERN** 04250  
**COLOR** Bayleaf

|  |                        |
|--|------------------------|
| <b>BRAND</b>                               | <b>APPLICATION</b>     |
| Trend                                      | Fabric                 |
| <b>USES</b>                                | <b>CATEGORIES</b>      |
| Bedding, Drapery, Multipurpose, Upholstery | Velvet / Grospoint     |
| <b>BOOK</b>                                | <b>COLORS</b>          |
| Vern Yip Palisades Velvet Vol. II          | Green                  |
| <b>DESIGN TYPES</b>                        | <b>DIRECTION SHOWN</b> |
| Solid                                      | Up the Bolt            |



|                       |                         |   |                       |
|-----------------------|-------------------------|---|-----------------------|
| <b>WIDTH</b>          | <b>VERTICAL REPEAT</b>  | <b>HORIZONTAL REPEAT</b>                      | <b>CONTENT</b>        |
| 54.00 in (137.16 cm)  | 0.00 in (0.00 cm)       | 0.00 in (0.00 cm)                             | 100% Polyester        |
| <b>BACKING</b>        | <b>FIRE CODES</b>       | <b>DOUBLE RUBS</b>                            | <b>PRODUCT NUMBER</b> |
| Light Acrylic Backing | UFAC Class I / NFPA 260 | Exceeds 50,000 Double Rubs (Wyzenbeek Method) | 8607948               |
| <b>DATE BOOKED</b>    | <b>COUNTRY</b>          | <b>CLEANING CODES</b>                         |                       |
| 09/2023               | China                   | S   |                       |

**ADDITIONAL PRODUCT NOTES**

Ca Tb 117-2013, Light Acrylic Backing, Exclusive Pattern