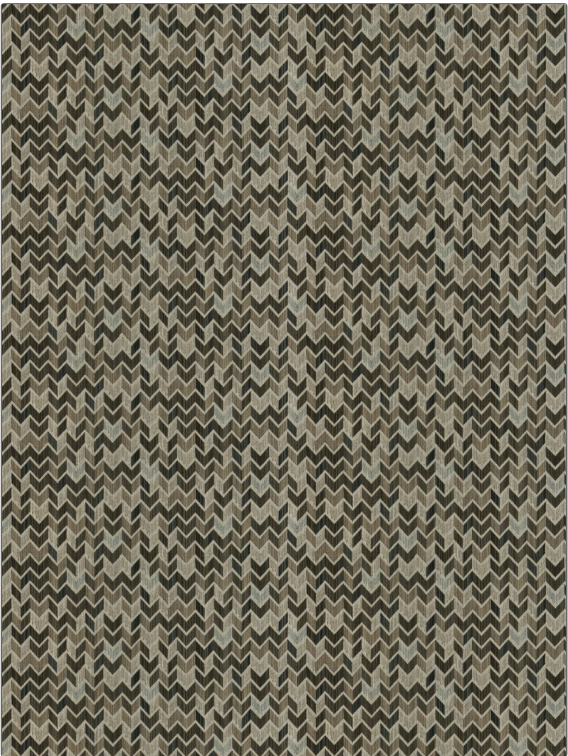


Fabric Product Details

PATTERN **04291**
COLOR **Mahogany**

BRAND	APPLICATION
Trend	Fabric
USES	CATEGORIES
Upholstery	Wovens
BOOK	COLORS
Wovens By Color Vol. III Camel-Tan	Brown, Beige
DESIGN TYPES	SCALE
Flamestitch, Geometric, Herringbone, Chevron, Contemporary / Modern	Medium
RAILOADED	
Railroaded	



WIDTH	VERTICAL REPEAT	HORIZONTAL REPEAT	CONTENT
54.00 in (137.16 cm)	9.50 in (24.13 cm)	28.25 in (71.76 cm)	63% Polyester, 26% Rayon, 11% Linen
BACKING	FIRE CODES	DOUBLE RUBS	PRODUCT NUMBER
100% Acrylic Backing	UFAC Class I / NFPA 260	Exceeds 12,000 Double Rubs (Wyzenbeek Method)	8844901
DATE BOOKED	COUNTRY	CLEANING CODES	
02/2018	China	SW	

ADDITIONAL PRODUCT NOTES

Ca Tb 117-2013, 100% Acrylic Backing, Shown Railroaded