

Fabric Product Details

PATTERN **04281**
COLOR **Steel**

BRAND

Trend

APPLICATION

Fabric

USES

Upholstery

CATEGORIES

**Wovens, Solids / Small
Scale Patterns**

COLORS

Light Green

DESIGN TYPES

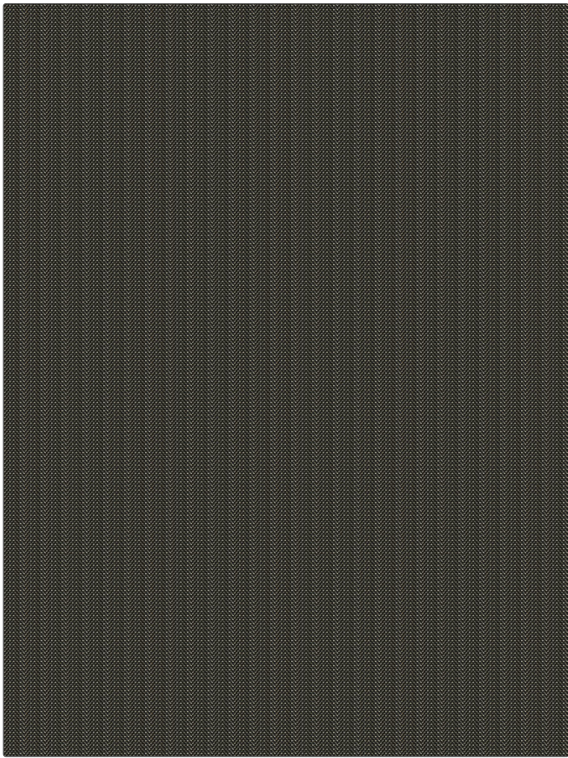
**Herringbone, Small Scale
Woven, Texture Plain,
Chevron**

SCALE

Small

RAILROADED

Not Railroaded



WIDTH

54.00 in (137.16 cm)

VERTICAL REPEAT

0.25 in (0.64 cm)

HORIZONTAL REPEAT

1.00 in (2.54 cm)

CONTENT

**88% Polyester, 12%
Viscose**

BACKING

FIRE CODES

UFAC Class I / NFPA 260

DOUBLE RUBS

**Exceeds 50,000 Double
Rubs (Wyzenbeek Method)**

PRODUCT NUMBER

8850001

COUNTRY

India

CLEANING CODES

S

ADDITIONAL PRODUCT NOTES

Ca Tb 117-2013