

Fabric Product Details

PATTERN **04302**
COLOR **Sand**

BRAND

Trend

APPLICATION

Fabric

USES

Upholstery

CATEGORIES

**Wovens, Solids / Small
Scale Patterns, Chenille**

COLORS

Taupe / Tan

DESIGN TYPES

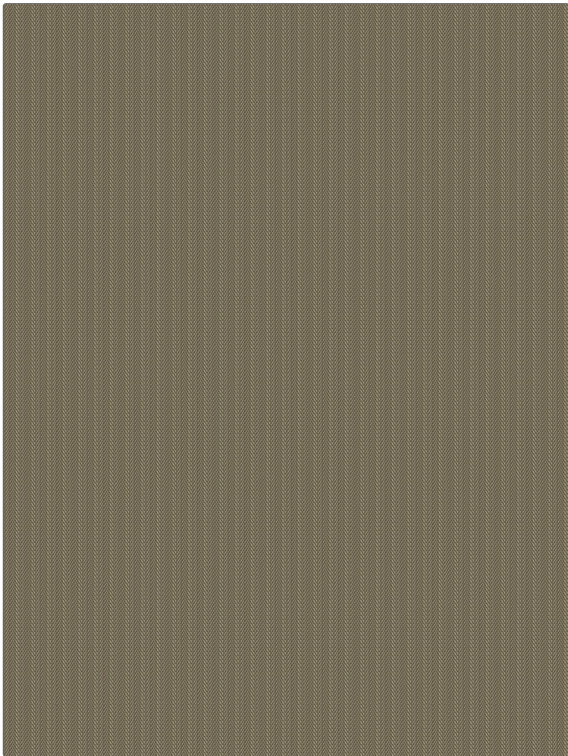
**Herringbone, Small Scale
Woven, Chevron**

SCALE

Small

RAILROADED

Not Railroaded



WIDTH

55.00 in (139.70 cm)

VERTICAL REPEAT

0.00 in (0.00 cm)

HORIZONTAL REPEAT

0.75 in (1.90 cm)

CONTENT

100% Polyester

BACKING

100% Acrylic Backing

FIRE CODES

UFAC Class I / NFPA 260

DOUBLE RUBS

**Exceeds 51,000 Double
Rubs (Wyzenbeek Method)**

PRODUCT NUMBER

8864103

COUNTRY

China

CLEANING CODES

S

ADDITIONAL PRODUCT NOTES

Passes 50,000 Martindale Tst, Ca Tb 117-2013, 100% Acrylic Backing