

# Fabric Product Details

**PATTERN** 04302  
**COLOR** 02

**BRAND**

**Trend**

**APPLICATION**

**Fabric**

**USES**

**Upholstery**

**CATEGORIES**

**Wovens, Solids / Small Scale Patterns, Chenille**

**COLORS**

**Brown, Taupe / Tan**

**DESIGN TYPES**

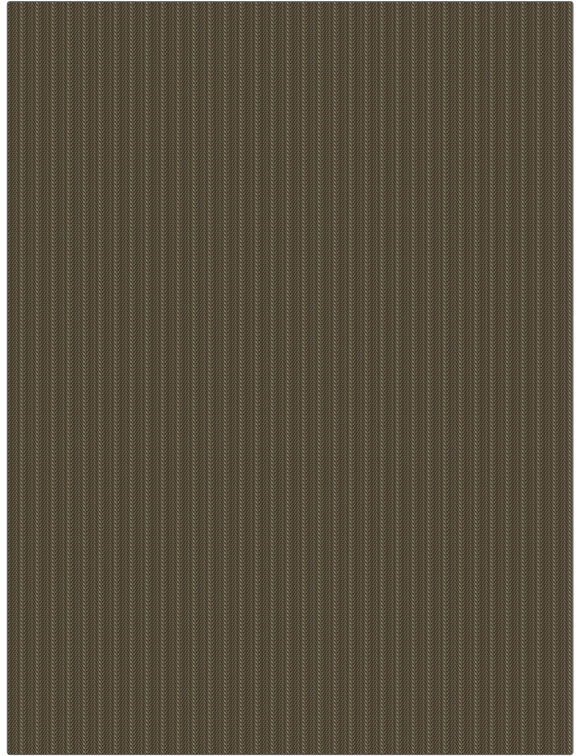
**Herringbone, Small Scale Woven, Chevron**

**SCALE**

**Small**

**RAILROADED**

**Not Railroaded**



**WIDTH**

**55.00 in (139.70 cm)**

**VERTICAL REPEAT**

**0.00 in (0.00 cm)**

**HORIZONTAL REPEAT**

**0.75 in (1.90 cm)**

**CONTENT**

**100% Polyester**

**BACKING**

**100% Acrylic Backing**

**FIRE CODES**

**UFAC Class I / NFPA 260**

**DOUBLE RUBS**

**Exceeds 51,000 Double Rubs (Wyzenbeek Method)**

**PRODUCT NUMBER**

**8864202**

**COUNTRY**

**China**

**CLEANING CODES**

**S**

**ADDITIONAL PRODUCT NOTES**

**Passes 50,000 Martindale Tst, Ca Tb 117-2013, 100% Acrylic Backing**