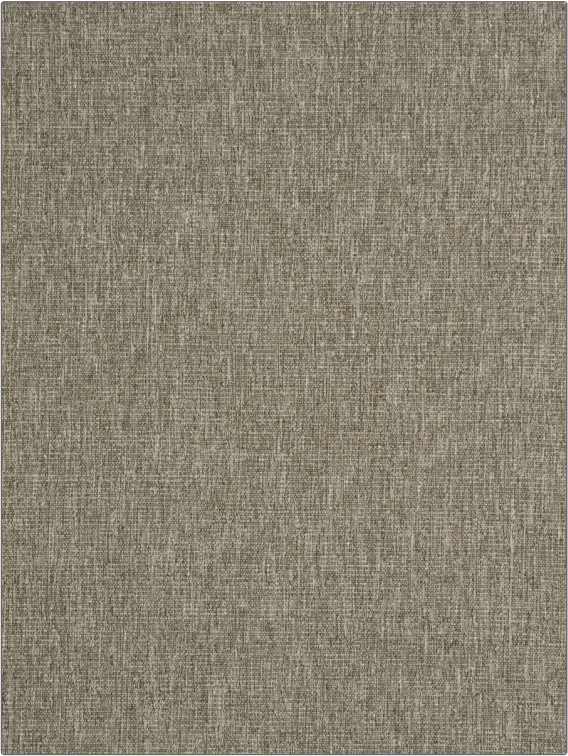


# Fabric Product Details

**PATTERN** 04375  
**COLOR** Chinchilla



<b>BRAND</b>	<b>APPLICATION</b>
Trend	Fabric
<b>USES</b>	<b>CATEGORIES</b>
Bedding, Drapery, Multipurpose	Wovens, Solids / Small Scale Patterns, Eco / Environment Plus
<b>BOOK</b>	<b>COLORS</b>
Gentle Texture	Taupe / Tan
<b>DESIGN TYPES</b>	<b>RAILROADED</b>
Solid, Texture Plain	Not Railroaded

<b>WIDTH</b>	<b>VERTICAL REPEAT</b>	<b>HORIZONTAL REPEAT</b>	<b>CONTENT</b>
54.00 in (137.16 cm)	0.00 in (0.00 cm)	0.00 in (0.00 cm)	62% Polyester, 38% Cotton
<b>BACKING</b>	<b>FIRE CODES</b>	<b>DOUBLE RUBS</b>	<b>PRODUCT NUMBER</b>
	UFAC Class I / NFPA 260, Passes MVS 302	Exceeds 70,000 Double Rubs (Wyzenbeek Method)	8865605
<b>DATE BOOKED</b>	<b>COUNTRY</b>	<b>CLEANING CODES</b>	
02/2018	India	S	

**ADDITIONAL PRODUCT NOTES**

Passes 70,000 Martindale Tst, Oeko Tex Standard 100, Ca Tb 117-2013, Exclusive Pattern, Eco / Environment Plus