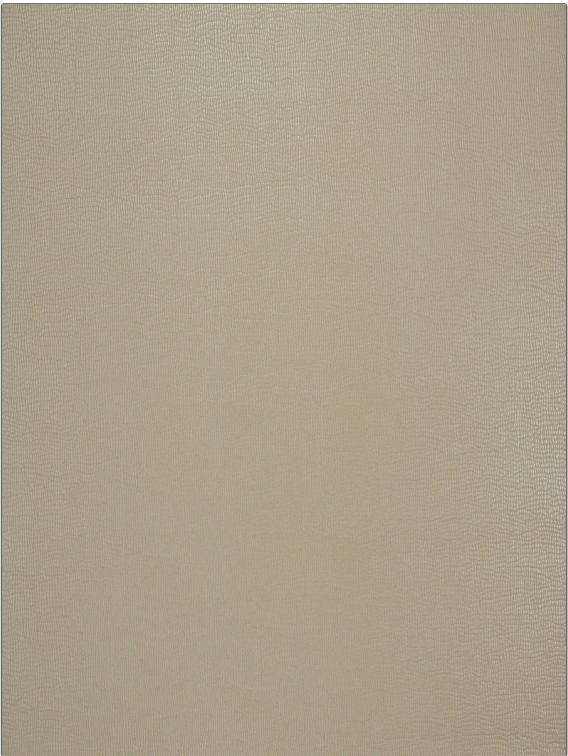


Fabric Product Details

PATTERN	04306
COLOR	Eggshell

BRAND	APPLICATION
Trend	Fabric
USES	CATEGORIES
Upholstery	Wovens, Solids / Small Scale Patterns, Faux Leather / Vinyl
BOOK	COLORS
Wovens By Color Vol. III Camel-Tan	Beige
DESIGN TYPES	SCALE
Solid, Animal Skins	Small
RAILROADED	
Not Railroaded	



WIDTH	VERTICAL REPEAT	HORIZONTAL REPEAT	CONTENT
56.00 in (142.24 cm)	0.00 in (0.00 cm)	0.00 in (0.00 cm)	Face 100% Phthalate Free Polyurethane, Back 80% Polyester 20% Cotton
BACKING	FIRE CODES	DOUBLE RUBS	PRODUCT NUMBER
Knit Backed	UFAC Class I / NFPA 260	Exceeds 105,000 Double Rubs (Wyzenbeek Method)	8902901
DATE BOOKED	COUNTRY	CLEANING CODES	
02/2018	China	W	

ADDITIONAL PRODUCT NOTES
Ca Tb 117-2013, Knit Backed