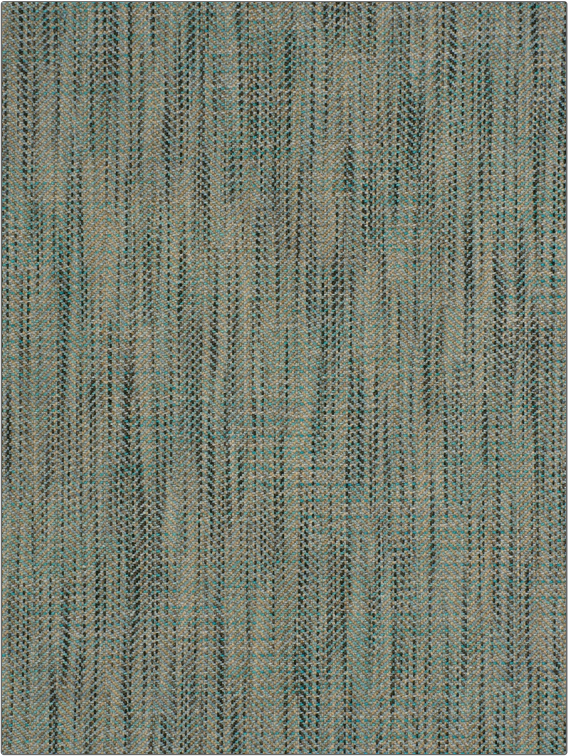


Fabric Product Details

PATTERN 04380
COLOR 04

BRAND	APPLICATION
Trend	Fabric
CATEGORIES	COLORS
Wovens	Light Blue, Beige
DESIGN TYPES	SCALE
Herringbone, Texture Plain	Small
RAILROADED	
Not Railroaded	



WIDTH	VERTICAL REPEAT	HORIZONTAL REPEAT	CONTENT
55.00 in (139.70 cm)	0.25 in (0.64 cm)	1.00 in (2.54 cm)	91% Polyester, 9% Viscose
BACKING	FIRE CODES	DOUBLE RUBS	PRODUCT NUMBER
	UFAC Class I / NFPA 260	Exceeds 65,000 Double Rubs (Wyzenbeek Method)	8904604
COUNTRY	CLEANING CODES		
India	S		

ADDITIONAL PRODUCT NOTES

Passes 30,000 Martindale Tst, Oeko Tex Standard 100, Ca Tb 117-2013, Exclusive Pattern, Eco / Environment Plus