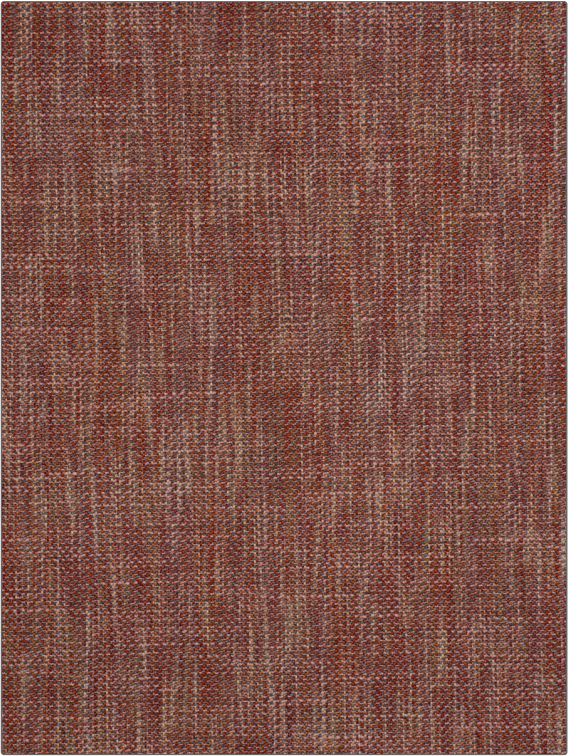


Fabric Product Details

PATTERN 04380
COLOR 11

BRAND	APPLICATION
Trend	Fabric
CATEGORIES	COLORS
Wovens	Lavender / Purple, Orange / Spice, Pink
DESIGN TYPES	SCALE
Herringbone, Texture Plain	Small
RAILROADED	
Not Railroaded	



WIDTH	VERTICAL REPEAT	HORIZONTAL REPEAT	CONTENT
55.00 in (139.70 cm)	0.25 in (0.64 cm)	1.00 in (2.54 cm)	91% Polyester, 9% Viscose
BACKING	FIRE CODES	DOUBLE RUBS	PRODUCT NUMBER
	UFAC Class I / NFPA 260	Exceeds 65,000 Double Rubs (Wyzenbeek Method)	8904611
COUNTRY	CLEANING CODES		
India	S		

ADDITIONAL PRODUCT NOTES

Passes 30,000 Martindale Tst, Oeko Tex Standard 100, Ca Tb 117-2013, Exclusive Pattern, Eco / Environment Plus