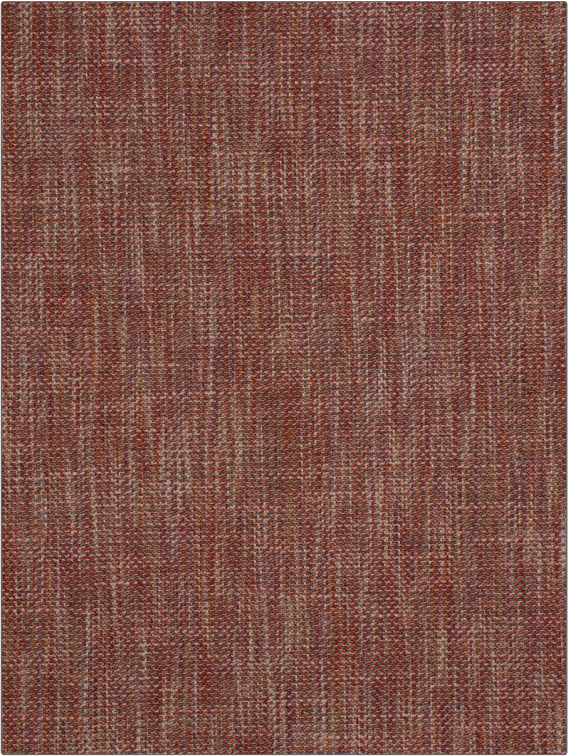


# Fabric Product Details

**PATTERN** 04380  
**COLOR** 14

<b>BRAND</b>	<b>APPLICATION</b>
<b>Trend</b>	<b>Fabric</b>
<b>CATEGORIES</b>	<b>COLORS</b>
<b>Wovens</b>	<b>Lavender / Purple, Orange / Spice, Pink</b>
<b>DESIGN TYPES</b>	<b>SCALE</b>
<b>Herringbone, Texture Plain</b>	<b>Small</b>
<b>RAILROADED</b>	
<b>Not Railroaded</b>	



<b>WIDTH</b>	<b>VERTICAL REPEAT</b>	<b>HORIZONTAL REPEAT</b>	<b>CONTENT</b>
<b>55.00 in (139.70 cm)</b>	<b>0.25 in (0.64 cm)</b>	<b>1.00 in (2.54 cm)</b>	<b>91% Polyester, 9% Viscose</b>
<b>BACKING</b>	<b>FIRE CODES</b>	<b>DOUBLE RUBS</b>	<b>PRODUCT NUMBER</b>
	<b>UFAC Class I / NFPA 260</b>	<b>Exceeds 65,000 Double Rubs (Wyzenbeek Method)</b>	<b>8904614</b>
<b>COUNTRY</b>	<b>CLEANING CODES</b>		
<b>India</b>	<b>S</b>		

**ADDITIONAL PRODUCT NOTES**

**Passes 30,000 Martindale Tst, Oeko Tex Standard 100, Ca Tb 117-2013, Exclusive Pattern, Eco / Environment Plus**