

# Fabric Product Details

**PATTERN** 04380  
**COLOR** 33

**BRAND**

**Trend**

**APPLICATION**

**Fabric**

**CATEGORIES**

**Wovens**

**COLORS**

**Grey, Lavender / Purple**

**DESIGN TYPES**

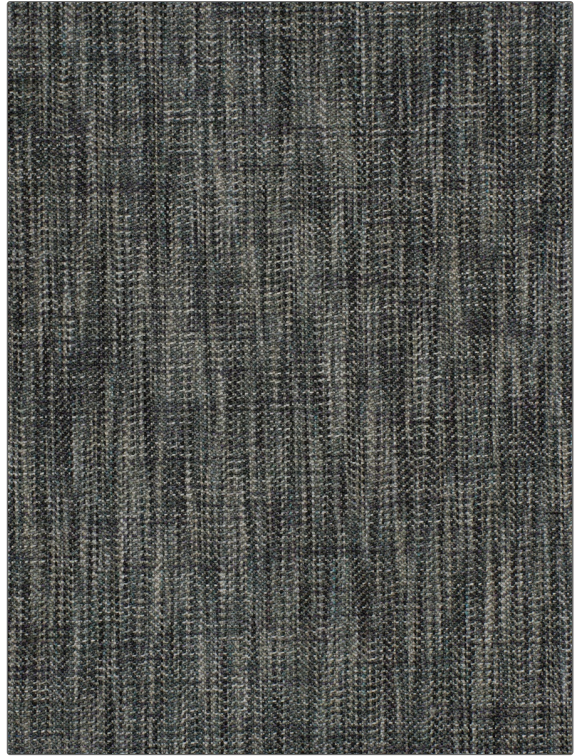
**Herringbone, Texture Plain**

**SCALE**

**Small**

**RAILROADED**

**Not Railroaded**



**WIDTH**

**55.00 in (139.70 cm)**

**VERTICAL REPEAT**

**0.25 in (0.64 cm)**

**HORIZONTAL REPEAT**

**1.00 in (2.54 cm)**

**CONTENT**

**91% Polyester, 9% Viscose**

**BACKING**

**FIRE CODES**

**UFAC Class I / NFPA 260**

**DOUBLE RUBS**

**Exceeds 65,000 Double Rubs (Wyzenbeek Method)**

**PRODUCT NUMBER**

**8904633**

**COUNTRY**

**India**

**CLEANING CODES**

**S**

**ADDITIONAL PRODUCT NOTES**

**Passes 30,000 Martindale Tst, Oeko Tex Standard 100, Ca Tb 117-2013, Exclusive Pattern, Eco / Environment Plus**