

# Fabric Product Details

**PATTERN** 04180  
**COLOR** Cashmere

**BRAND**

**Trend**

**APPLICATION**

**Fabric**

**USES**

**Bedding, Drapery,  
 Multipurpose, Upholstery**

**CATEGORIES**

**Wovens, Solids / Small  
 Scale Patterns, Chenille**

**COLORS**

**Beige**

**DESIGN TYPES**

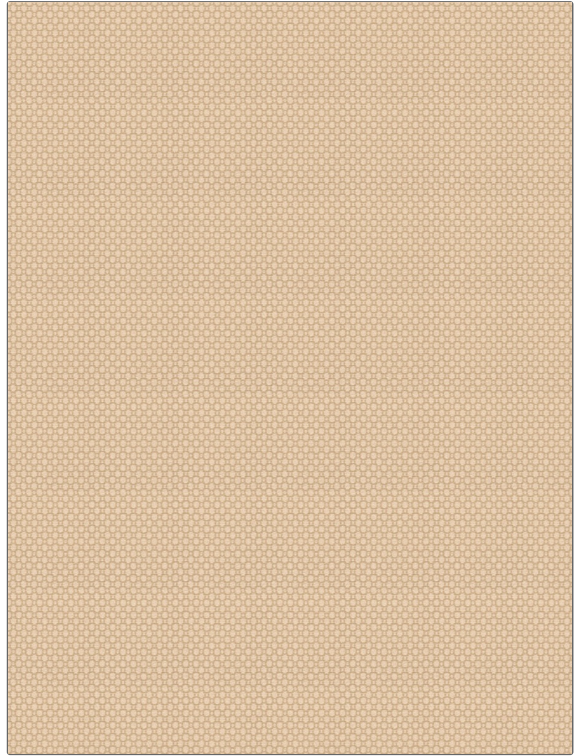
**Geometric, Small Scale  
 Woven, Dots / Circles**

**SCALE**

**Small**

**RAILROADED**

**Not Railroaded**



**WIDTH**

**54.00 in (137.16 cm)**

**FINISH**

**Soil & Stain Repellent Finish**

**VERTICAL REPEAT**

**0.75 in (1.90 cm)**

**HORIZONTAL REPEAT**

**0.50 in (1.27 cm)**

**CONTENT**

**54% Rayon, 27% Polyester,  
 19% Cotton**

**BACKING**

**FIRE CODES**

**UFAC Class I / NFPA 260**

**DOUBLE RUBS**

**Exceeds 21,000 Double  
 Rubs (Wyzenbeek Method)**

**PRODUCT NUMBER**

**8945801**

**COUNTRY**

**China**

**CLEANING CODES**

**S**

**ADDITIONAL PRODUCT NOTES**

**Soil & Stain Repellent Finish, Pfas-Free, Ca Tb 117-2013, Exclusive Pattern**