

# Fabric Product Details

**PATTERN** 04410  
**COLOR** 01

**BRAND**

**Trend**

**APPLICATION**

**Fabric**

**USES**

**Bedding, Drapery**

**CATEGORIES**

**Crewels / Embroideries**

**COLORS**

**Beige, Off White / Ivory**

**DESIGN TYPES**

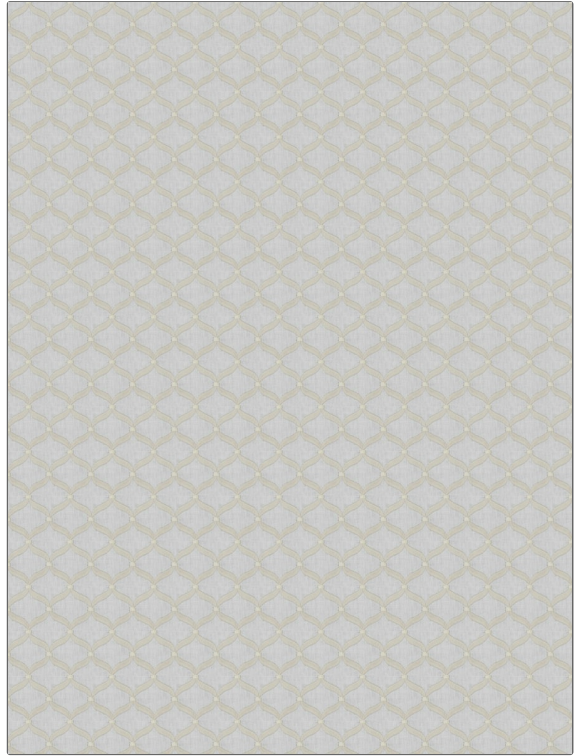
**Embroidery, Ogee**

**SCALE**

**Small**

**RAILROADED**

**Not Railroaded**



**WIDTH**

**52.00 in (132.08 cm)**

**VERTICAL REPEAT**

**2.25 in (5.72 cm)**

**HORIZONTAL REPEAT**

**2.00 in (5.08 cm)**

**CONTENT**

**Embroidery: 100% Polyester, Base: 60% Polyester, 30% Cotton, 10% Linen**

**BACKING**

**PRODUCT NUMBER**

**9030001**

**COUNTRY**

**India**

**CLEANING CODES**

**S**

**ADDITIONAL PRODUCT NOTES**

**Exclusive Pattern, Embroidered Textiles Are Not, Guaranteed For Precise Color, Matching And Colorfastness., Color Placement Of Embroidery, May Vary. All Measurements, Quoted For Repeats Are, Approximate.**