

Fabric Product Details

PATTERN **05320**  
COLOR **Ink**

BRAND

**Trend**

APPLICATION

**Fabric**

USES

**Bedding, Drapery,  
Multipurpose**

CATEGORIES

**Prints**

BOOK

**Chromatics Vol. II (4 Books)  
Blue / Moss**

COLORS

**Blue**

DESIGN TYPES

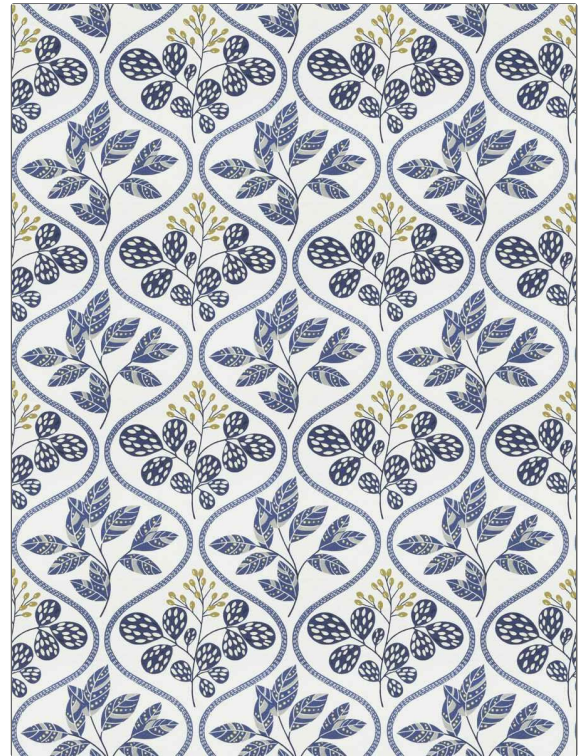
**Leaves, Novelty, Print  
Pattern, Tropical /  
Botanical, Contemporary /  
Modern, Ogee**

SCALE

**Medium**

RAILROADED

**Not Railroaded**



WIDTH

**54.00 in (137.16 cm)**

VERTICAL REPEAT

**9.00 in (22.86 cm)**

HORIZONTAL REPEAT

**9.00 in (22.86 cm)**

CONTENT

**100% Cotton**

BACKING

FIRE CODES

**UFAC Class I**

DOUBLE RUBS

**Exceeds 50,000 Double  
Rubs (Wyzenbeek Method)**

PRODUCT NUMBER

**9726602**

DATE BOOKED

**04/2023**

COUNTRY

**Spain**

CLEANING CODES

**S**

ADDITIONAL PRODUCT NOTES

**Ca Tb 117-2013**