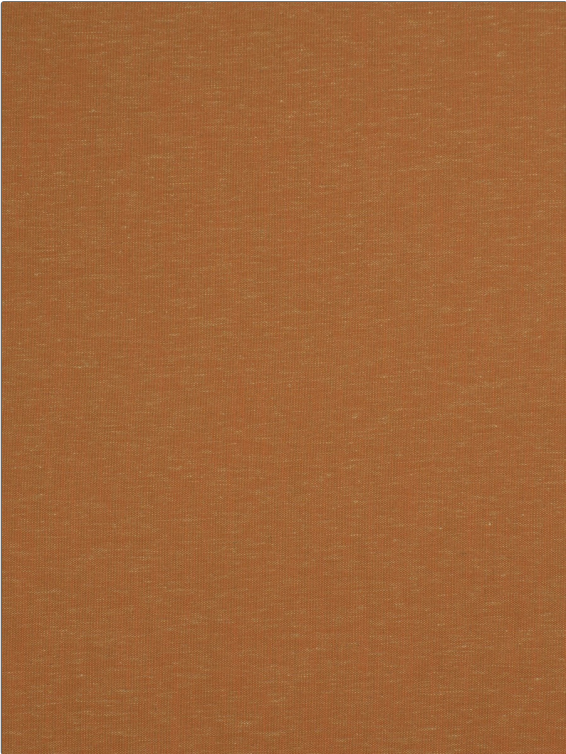


# Fabric Product Details

**PATTERN** 04645  
**COLOR** Orange



<b>BRAND</b>	<b>APPLICATION</b>
<b>Trend</b>	<b>Fabric</b>
<b>USES</b>	<b>CATEGORIES</b>
<b>Bedding, Drapery, Multipurpose</b>	<b>Faux Linen, Wovens</b>
<b>COLORS</b>	<b>DESIGN TYPES</b>
<b>Orange / Spice</b>	<b>Solid, Texture Plain</b>
<b>RAILROADED</b>	
<b>Not Railroaded</b>	

<b>WIDTH</b>	<b>VERTICAL REPEAT</b>	<b>HORIZONTAL REPEAT</b>	<b>CONTENT</b>
54.00 in (137.16 cm)	0.00 in (0.00 cm)	0.00 in (0.00 cm)	90% Polyester, 10% Cotton
<b>BACKING</b>	<b>FIRE CODES</b>	<b>DOUBLE RUBS</b>	<b>PRODUCT NUMBER</b>
	UFAC Class I / NFPA 260	Exceeds 36,000 Double Rubs (Wyzenbeek Method)	9770909
<b>COUNTRY</b>	<b>CLEANING CODES</b>		
Turkey	S		

**ADDITIONAL PRODUCT NOTES**

Passes 25,000 Martindale Tst, Oeko Tex Standard 100, Ca Tb 117-2013, Exclusive Pattern, Eco / Environment Plus