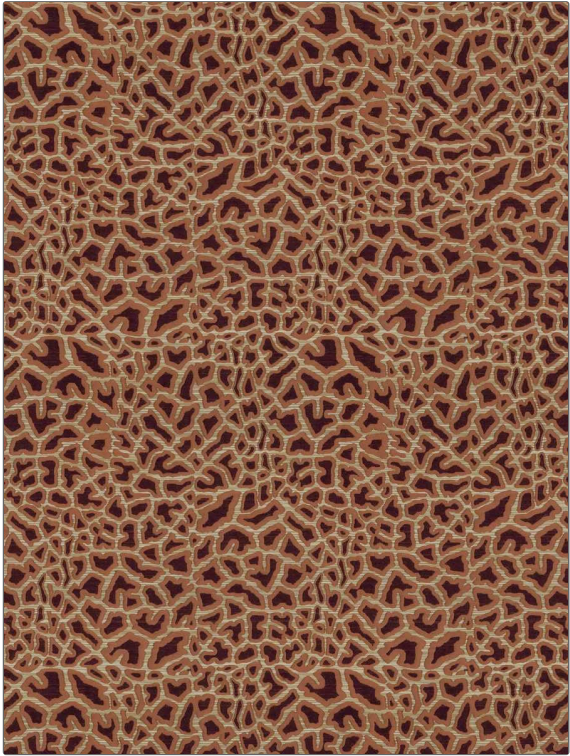


# Fabric Product Details

**PATTERN** Wise Ranger  
**COLOR** Poppy

|                        |                     |
|------------------------|---------------------|
| <b>BRAND</b>           | <b>APPLICATION</b>  |
| Vervain                | Fabric              |
| <b>USES</b>            | <b>CATEGORIES</b>   |
| Upholstery             | Wool, Wovens        |
| <b>BOOK</b>            | <b>COLORS</b>       |
| Denise McGaha          | Orange / Spice, Red |
| <b>DESIGN TYPES</b>    | <b>SCALE</b>        |
| Animal Skins, Abstract | Medium              |
| <b>RAILROADED</b>      |                     |
| Not Railroaded         |                     |



|                      |                         |   |   |
|----------------------|-------------------------|---|---|
| <b>WIDTH</b>         | <b>VERTICAL REPEAT</b>  | <b>HORIZONTAL REPEAT</b>                      | <b>CONTENT</b>                              |
| 53.00 in (134.62 cm) | 15.00 in (38.10 cm)     | 13.25 in (33.66 cm)                           | 43% Wool, 37% Cotton, 15% Nylon, 5% Acrylic |
| <b>BACKING</b>       | <b>FIRE CODES</b>       | <b>DOUBLE RUBS</b>                            | <b>PRODUCT NUMBER</b>                       |
|                      | UFAC Class I / NFPA 260 | Exceeds 51,000 Double Rubs (Wyzenbeek Method) | 1464302                                     |
| <b>DATE BOOKED</b>   | <b>COUNTRY</b>          | <b>CLEANING CODES</b>                         |   |
| 01/2023              | USA                     | S   |   |

**ADDITIONAL PRODUCT NOTES**  
 Ca Tb 117-2013, Exclusive Pattern