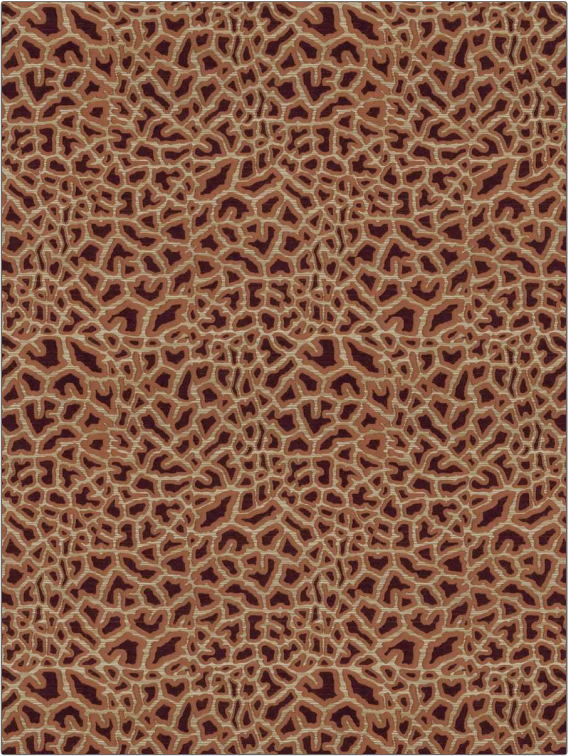


Fabric Product Details

PATTERN Wise Ranger
COLOR 02

BRAND	APPLICATION
Vervain	Fabric
USES	CATEGORIES
Upholstery	Wool, Wovens
COLORS	DESIGN TYPES
Orange / Spice, Red	Animal Skins, Abstract
SCALE	RAILROADED
Medium	Not Railroaded



WIDTH	VERTICAL REPEAT	HORIZONTAL REPEAT	CONTENT
53.00 in (134.62 cm)	15.00 in (38.10 cm)	13.25 in (33.66 cm)	43% Wool, 37% Cotton, 15% Nylon, 5% Acrylic
BACKING	FIRE CODES	DOUBLE RUBS	PRODUCT NUMBER
	UFAC Class I / NFPA 260	Exceeds 51,000 Double Rubs (Wyzenbeek Method)	1464402
COUNTRY	CLEANING CODES		
USA	S		

ADDITIONAL PRODUCT NOTES

Ca Tb 117-2013, Exclusive Pattern