

Fabric Product Details

PATTERN Lamb's Ear
COLOR 10

BRAND

Vervain

APPLICATION

Fabric

USES

Upholstery

CATEGORIES

Velvet / Grospoint

COLORS

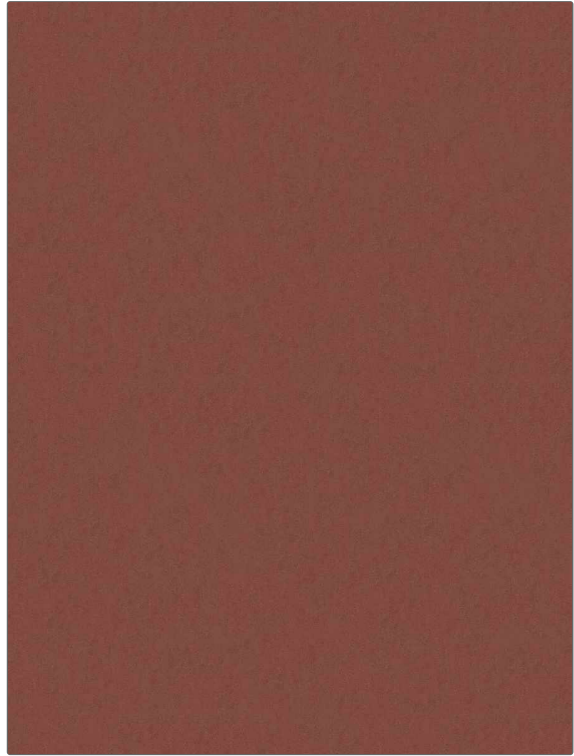
Orange / Spice

DESIGN TYPES

Solid

RAILROADED

Not Railroaded



WIDTH

55.00 in (139.70 cm)

VERTICAL REPEAT

0.00 in (0.00 cm)

HORIZONTAL REPEAT

0.00 in (0.00 cm)

CONTENT

96% Polyester, 4% Cotton

BACKING

FIRE CODES

UFAC Class I / NFPA 260

DOUBLE RUBS

Exceeds 51,000 Double Rubs (Wyzenbeek Method)

PRODUCT NUMBER

1475010

COUNTRY

Italy

CLEANING CODES

S

ADDITIONAL PRODUCT NOTES

Passes 200,000 Martindale Tst, Ca Tb 117-2013, Exclusive Pattern