

# Fabric Product Details

**PATTERN** Rush  
**COLOR** Poppy

**BRAND**

**Vervain**

**APPLICATION**

**Fabric**

**USES**

**Upholstery**

**CATEGORIES**

**Wovens, Solids / Small Scale Patterns, Linen**

**BOOK**

**Denise McGaha**

**COLORS**

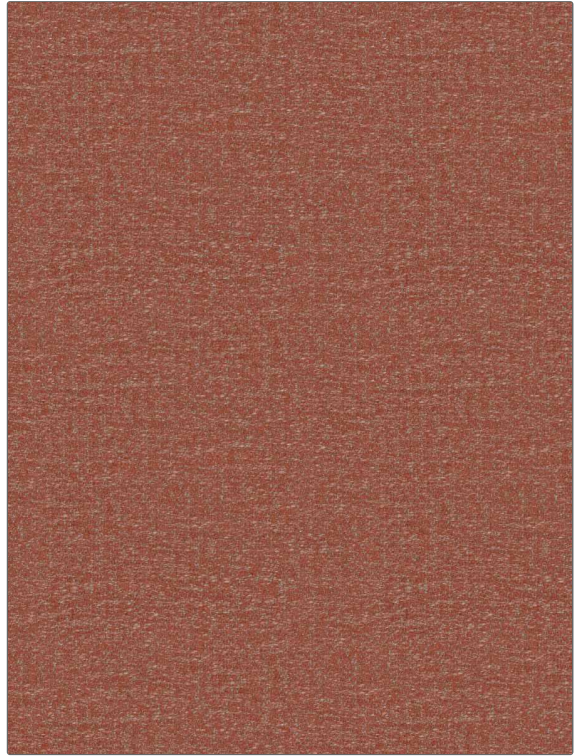
**Red**

**DESIGN TYPES**

**Texture Plain**

**RAILROADED**

**Not Railroaded**



**WIDTH**

**54.00 in (137.16 cm)**

**VERTICAL REPEAT**

**0.00 in (0.00 cm)**

**HORIZONTAL REPEAT**

**0.00 in (0.00 cm)**

**CONTENT**

**46% Linen, 30% Cotton, 12% Acrylic, 10% Lyocell, 1% Viscose, 1% Polyester**

**BACKING**

**DOUBLE RUBS**

**Exceeds 51,000 Double Rubs (Wyzenbeek Method)**

**PRODUCT NUMBER**

**1475506**

**DATE BOOKED**

**01/2023**

**COUNTRY**

**India**

**CLEANING CODES**

**S**

**ADDITIONAL PRODUCT NOTES**

**Exclusive Pattern, Slight Variations In Color, May Occur From Lot To Lot., Cutting From Current Stock, Is Advised.**