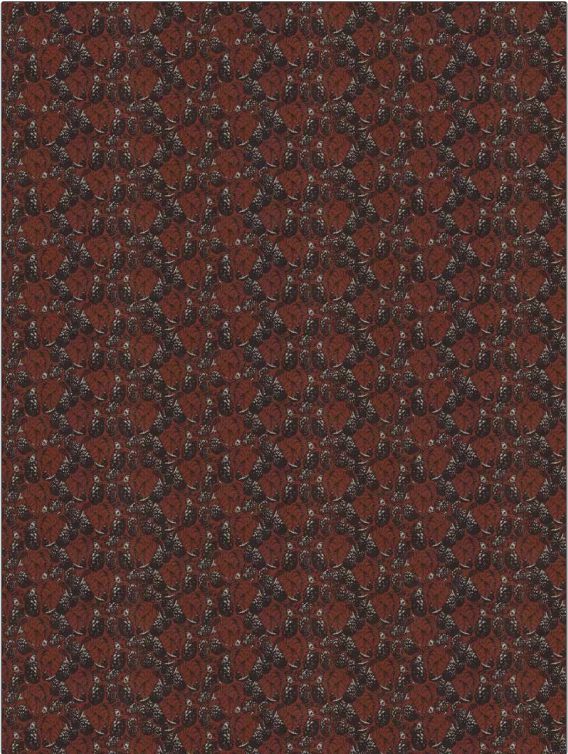


Fabric Product Details

PATTERN Berrymore
COLOR Poppy

BRAND	APPLICATION
Vervain	Fabric
USES	CATEGORIES
Bedding, Drapery, Multipurpose	Prints
BOOK	COLORS
Denise McGaha	Pink
DESIGN TYPES	SCALE
Leaves	Medium
DIRECTION SHOWN	
Up the Bolt	



WIDTH	VERTICAL REPEAT	HORIZONTAL REPEAT	CONTENT
55.00 in (139.70 cm)	6.50 in (16.51 cm)	18.50 in (46.99 cm)	52% Cotton, 48% Linen
BACKING	FIRE CODES	DOUBLE RUBS	PRODUCT NUMBER
	UFAC Class I / NFPA 260	Exceeds 18,000 Double Rubs	1514803
DATE BOOKED	COUNTRY	CLEANING CODES	
11/2023	Italy	S	

ADDITIONAL PRODUCT NOTES
 Passes 18,000 Martindale Tst, Ca Tb 117-2013, Exclusive Pattern