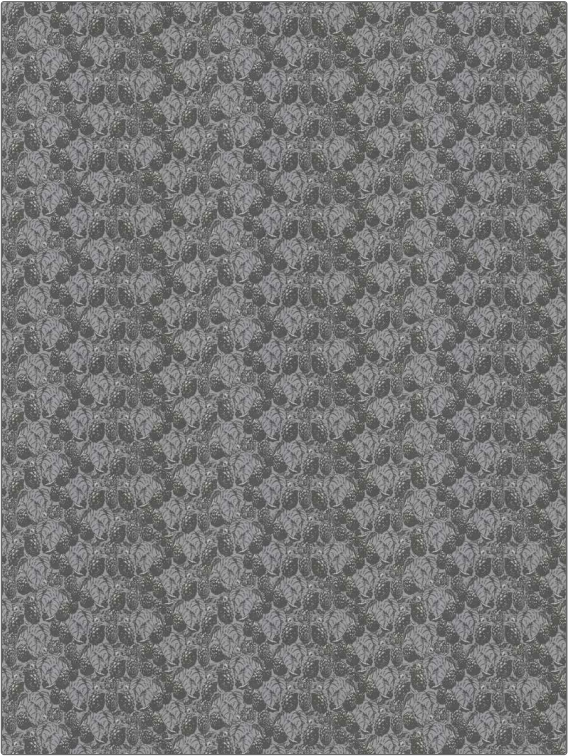


Fabric Product Details

PATTERN **Berrymore**
COLOR **02**

| | |
|---------------------------------------|------------------------|
| BRAND | APPLICATION |
| Vervain | Fabric |
| USES | CATEGORIES |
| Bedding, Drapery, Multipurpose | Prints |
| COLORS | DESIGN TYPES |
| Blue, Light Blue | Leaves |
| SCALE | DIRECTION SHOWN |
| Medium | Up the Bolt |



| | | | |
|-----------------------------|--------------------------------|-----------------------------------|------------------------------|
| WIDTH | VERTICAL REPEAT | HORIZONTAL REPEAT | CONTENT |
| 55.00 in (139.70 cm) | 6.50 in (16.51 cm) | 18.50 in (46.99 cm) | 52% Cotton, 48% Linen |
| BACKING | FIRE CODES | DOUBLE RUBS | PRODUCT NUMBER |
| | UFAC Class I / NFPA 260 | Exceeds 18,000 Double Rubs | 1514902 |
| COUNTRY | CLEANING CODES | | |
| Italy | S | | |

ADDITIONAL PRODUCT NOTES

Passes 18,000 Martindale Tst, Ca Tb 117-2013, Exclusive Pattern