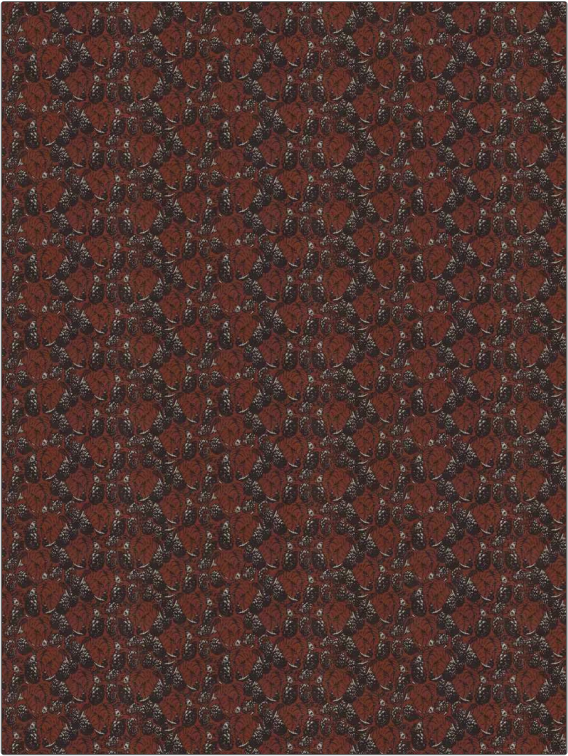


Fabric Product Details

PATTERN **Berrymore**
COLOR **03**

BRAND	APPLICATION
Vervain	Fabric
USES	CATEGORIES
Bedding, Drapery, Multipurpose	Prints
COLORS	DESIGN TYPES
Pink	Leaves
SCALE	RAILROADED
Medium	Not Railroaded



WIDTH	VERTICAL REPEAT	HORIZONTAL REPEAT	CONTENT
55.00 in (139.70 cm)	6.50 in (16.51 cm)	18.50 in (46.99 cm)	52% Cotton, 48% Linen
BACKING	FIRE CODES	DOUBLE RUBS	PRODUCT NUMBER
	UFAC Class I / NFPA 260	Exceeds 18,000 Double Rubs	1514903
COUNTRY	CLEANING CODES		
Italy	S		

ADDITIONAL PRODUCT NOTES

Passes 18,000 Martindale Tst, Ca Tb 117-2013, Exclusive Pattern