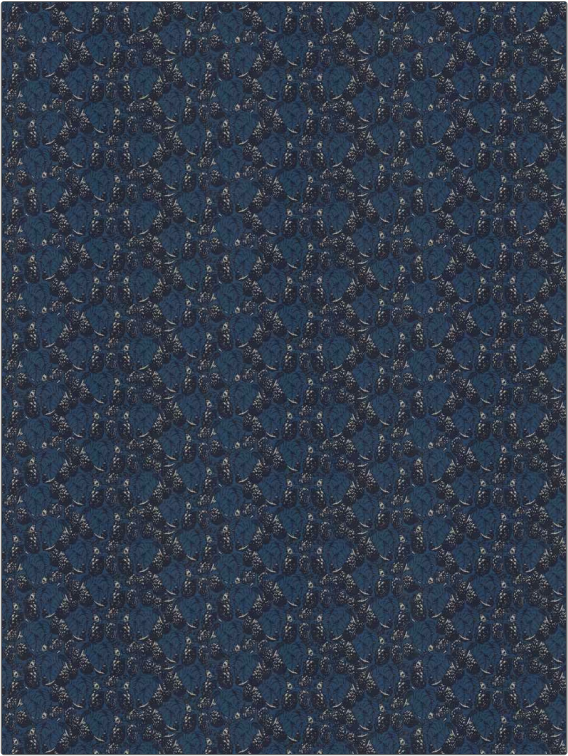


# Fabric Product Details

**PATTERN** **Berrymore**  
**COLOR** **04**

<b>BRAND</b>	<b>APPLICATION</b>
<b>Vervain</b>	<b>Fabric</b>
<b>USES</b>	<b>CATEGORIES</b>
<b>Bedding, Drapery, Multipurpose</b>	<b>Prints</b>
<b>COLORS</b>	<b>DESIGN TYPES</b>
<b>Blue, Lavender / Purple</b>	<b>Leaves</b>
<b>SCALE</b>	<b>RAILROADED</b>
<b>Medium</b>	<b>Not Railroaded</b>



<b>WIDTH</b>	<b>VERTICAL REPEAT</b>	<b>HORIZONTAL REPEAT</b>	<b>CONTENT</b>
<b>55.00 in (139.70 cm)</b>	<b>6.50 in (16.51 cm)</b>	<b>18.50 in (46.99 cm)</b>	<b>52% Cotton, 48% Linen</b>
<b>BACKING</b>	<b>FIRE CODES</b>	<b>DOUBLE RUBS</b>	<b>PRODUCT NUMBER</b>
	<b>UFAC Class I / NFPA 260</b>	<b>Exceeds 18,000 Double Rubs</b>	<b>1514904</b>
<b>COUNTRY</b>	<b>CLEANING CODES</b>		
<b>Italy</b>	<b>S</b>		

**ADDITIONAL PRODUCT NOTES**

**Passes 18,000 Martindale Tst, Ca Tb 117-2013, Exclusive Pattern**