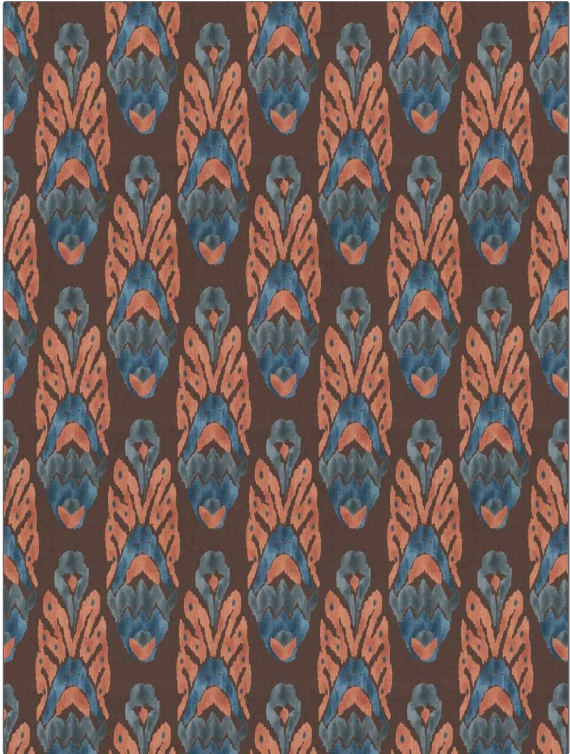


# Fabric Product Details

**PATTERN** Asante II  
**COLOR** Pottery Blue

<b>BRAND</b>	<b>APPLICATION</b>
Vervain	Fabric
<b>USES</b>	<b>CATEGORIES</b>
Bedding, Drapery, Multipurpose, Upholstery	Prints, Linen
<b>BOOK</b>	<b>COLORS</b>
Quintessential	Blue, Coral / Peach
<b>DESIGN TYPES</b>	<b>SCALE</b>
Global / Ethnic	Large
<b>RAILROADED</b>	
Not Railroaded	



<b>WIDTH</b>	<b>VERTICAL REPEAT</b>	<b>HORIZONTAL REPEAT</b>	<b>CONTENT</b>
56.00 in (142.24 cm)	25.20 in (64.01 cm)	13.50 in (34.29 cm)	100% Linen
<b>BACKING</b>	<b>FIRE CODES</b>	<b>DOUBLE RUBS</b>	<b>PRODUCT NUMBER</b>
	UFAC Class I / NFPA 260	Exceeds 51,000 Double Rubs (Wyzenbeek Method)	2125302
<b>DATE BOOKED</b>	<b>COUNTRY</b>	<b>CLEANING CODES</b>	
08/2024	USA	S	

**ADDITIONAL PRODUCT NOTES**  
 Ca Tb 117-2013, Exclusive Pattern