

Fabric Product Details

PATTERN **Galatea**  
COLOR **03**

BRAND

**Vervain**

APPLICATION

**Fabric**

CATEGORIES

**Crewels / Embroideries**

COLORS

**Blue**

DESIGN TYPES

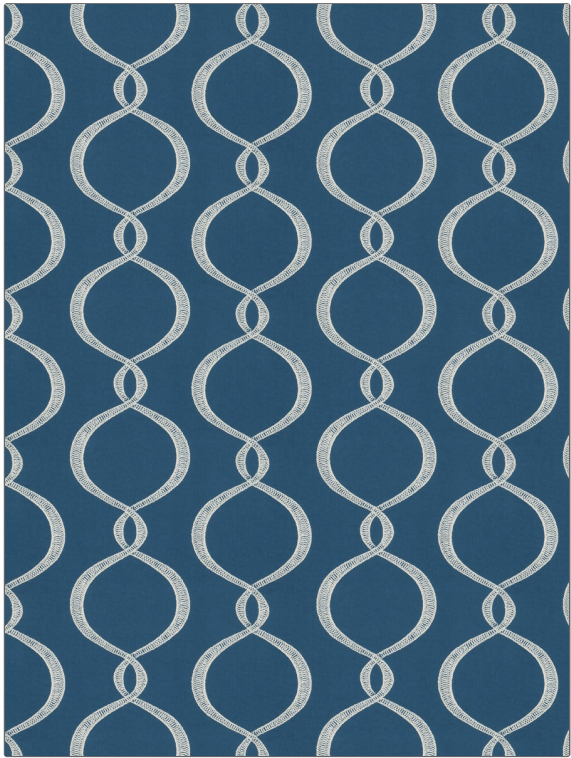
**Ogee**

SCALE

**Large**

RAILROADED

**Not Railroaded**



WIDTH

**48.00 in (121.92 cm)**

VERTICAL REPEAT

**7.87 in (19.99 cm)**

HORIZONTAL REPEAT

**11.81 in (30.00 cm)**

CONTENT

**Embroidery: 53% Cotton,  
45% Viscose, 1% Polyester,  
1% Nylon, Base: 100%  
Cotton**

BACKING

PRODUCT NUMBER

**4626003**

COUNTRY

**India**

CLEANING CODES

**S**

ADDITIONAL PRODUCT NOTES

**Exclusive Pattern, Embroidered Textiles Are Not, Guaranteed For Precise Color, Matching And Colorfastness., Color Placement Of Embroidery, May Vary. All Measurements, Quoted For Repeats Are, Approximate.**