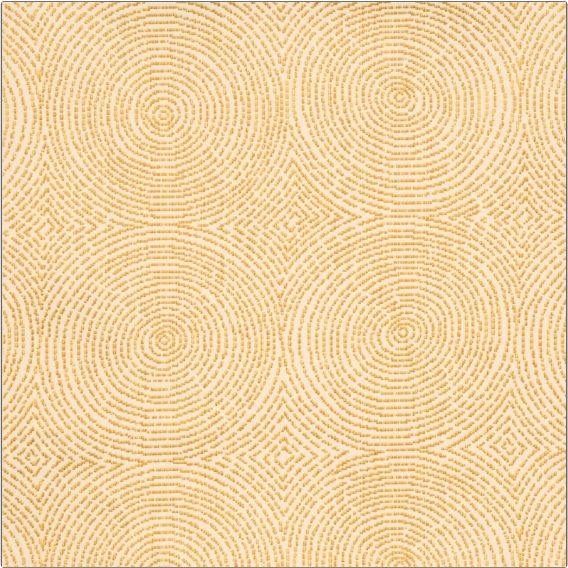


# Fabric Product Details

**PATTERN** **Crop Art Circles**  
**COLOR** **02**



|   |                     |
|---|---------------------|
| <b>BRAND</b>  | <b>APPLICATION</b>  |
| <b>Vervain</b>  | <b>Fabric</b>       |
| <b>CATEGORIES</b>   | <b>COLORS</b>       |
| <b>Wovens</b>   | <b>Gold, Yellow</b> |
| <b>DESIGN TYPES</b>   | <b>SCALE</b>        |
| <b>Geometric, Jacquard Pattern, Contemporary / Modern, Dots / Circles</b> | <b>Medium</b>       |
| <b>RAILROADED</b>   |                     |
| <b>Not Railroaded</b>   |                     |

|                             |                            |  |                               |
|-----------------------------|----------------------------|--|-------------------------------|
| <b>WIDTH</b>                | <b>VERTICAL REPEAT</b>     | <b>HORIZONTAL REPEAT</b>                             | <b>CONTENT</b>                |
| <b>55.00 in (139.70 cm)</b> | <b>13.50 in (34.29 cm)</b> | <b>13.80 in (35.05 cm)</b>                           | <b>80% Viscose 20% Cotton</b> |
| <b>BACKING</b>              | <b>FIRE CODES</b>          | <b>DOUBLE RUBS</b>                                   | <b>PRODUCT NUMBER</b>         |
|                             | <b>UFAC Class II</b>       | <b>Exceeds 20,000 Double Rubs (Wyzenbeek Method)</b> | <b>5006102</b>                |
| <b>COUNTRY</b>              | <b>CLEANING CODES</b>      |  |                               |
| <b>Italy</b>                | <b>S</b>                   |  |                               |

**ADDITIONAL PRODUCT NOTES**

---

**Exclusive Pattern**