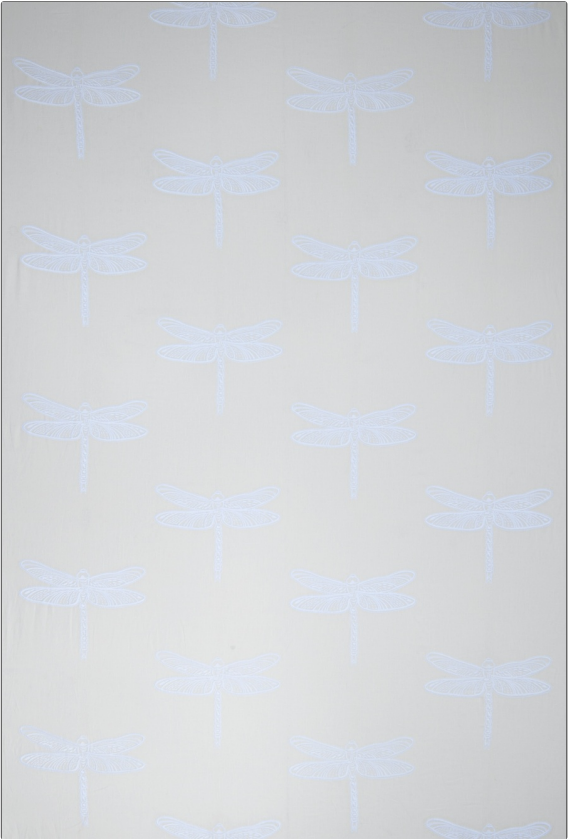


Fabric Product Details

| | |
|---------|---------|
| PATTERN | Odonata |
| COLOR | 101 |

| | |
|---------------------------------------|-------------------|
| BRAND | APPLICATION |
| Vervain | Fabric |
| CATEGORIES | COLORS |
| Crewels / Embroideries, Linen | Off White / Ivory |
| DESIGN TYPES | SCALE |
| Animal, Novelty, Tropical / Botanical | Large |
| RAILOADED | |
| Not Railroaded | |



| | | | |
|----------------------|---------------------|---------------------|---|
| WIDTH | VERTICAL REPEAT | HORIZONTAL REPEAT | CONTENT |
| 54.00 in (137.16 cm) | 15.70 in (39.88 cm) | 25.20 in (64.01 cm) | Embroidery: 100% Spun Polyester, Base: 100% Linen |
| BACKING | PRODUCT NUMBER | COUNTRY | CLEANING CODES |
| | 5031301 | India | S |

| |
|---|
| ADDITIONAL PRODUCT NOTES |
| Exclusive Pattern, Embroidered Textiles Are Not, Guaranteed For Precise Color, Matching And Colorfastness., Color Placement Of Embroidery, May Vary. All Measurements, Quoted For Repeats Are, Approximate. |