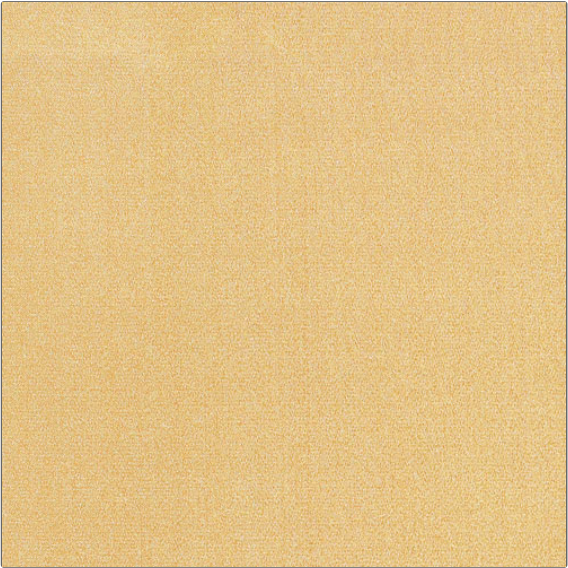


Fabric Product Details

PATTERN **Caserta Satin**
COLOR **Bamboo**



BRAND	APPLICATION
Vervain	Fabric
CATEGORIES	COLORS
Silk, Solids / Small Scale Patterns	Gold
DESIGN TYPES	RAILROADED
Solid	Not Railroaded

WIDTH	VERTICAL REPEAT	HORIZONTAL REPEAT	CONTENT
54.00 in (137.16 cm)	0.00 in (0.00 cm)	0.00 in (0.00 cm)	30% Silk 70% Rayon
BACKING	FIRE CODES	DOUBLE RUBS	PRODUCT NUMBER
	UFAC Class I	Exceeds 9,000 Double Rubs (Wyzenbeek Method)	0534320
COUNTRY	CLEANING CODES		
India	S		

ADDITIONAL PRODUCT NOTES
Exclusive Pattern