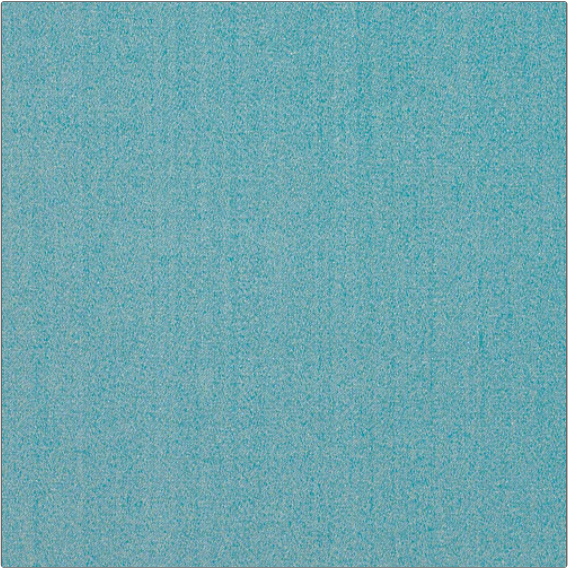


Fabric Product Details

PATTERN **Caserta Satin**  
COLOR **15**



BRAND	APPLICATION
<b>Vervain</b>	<b>Fabric</b>
CATEGORIES	COLORS
<b>Silk, Solids / Small Scale Patterns</b>	<b>Green, Aqua / Teal</b>
DESIGN TYPES	RAILROADED
<b>Solid</b>	<b>Not Railroaded</b>

WIDTH	VERTICAL REPEAT	HORIZONTAL REPEAT	CONTENT
<b>54.00 in (137.16 cm)</b>	<b>0.00 in (0.00 cm)</b>	<b>0.00 in (0.00 cm)</b>	<b>30% Silk 70% Rayon</b>
BACKING	FIRE CODES	DOUBLE RUBS	PRODUCT NUMBER
	<b>UFAC Class I</b>	<b>Exceeds 9,000 Double Rubs (Wyzenbeek Method)</b>	<b>0534415</b>
COUNTRY	CLEANING CODES		
<b>India</b>	<b>S</b>		

ADDITIONAL PRODUCT NOTES  
**Exclusive Pattern**