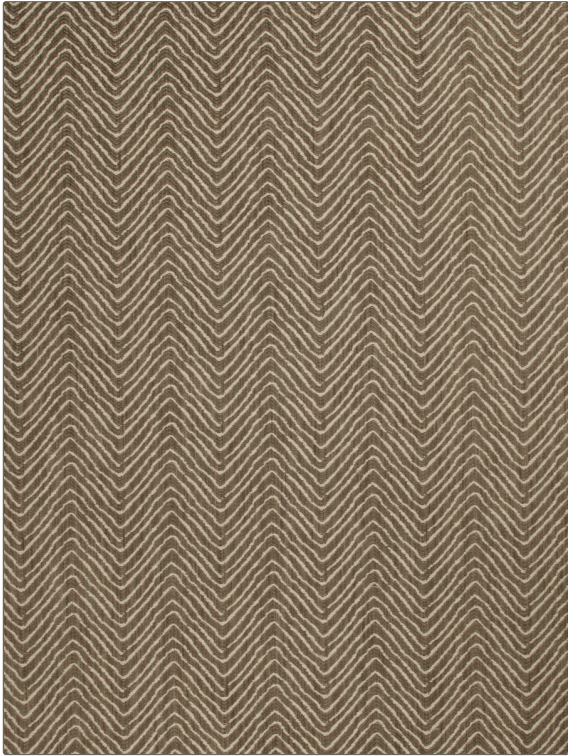


# Fabric Product Details

**PATTERN** Dromedary Woven  
**COLOR** Dark Stem

<b>BRAND</b>	<b>APPLICATION</b>
Vervain	Fabric
<b>USES</b>	<b>CATEGORIES</b>
Bedding, Multipurpose, Upholstery	Wovens
<b>BOOK</b>	<b>COLORS</b>
Barry Dixon Collection 2014 Barry Dixon Fall 2014	Brown
<b>DESIGN TYPES</b>	<b>SCALE</b>
Herringbone	Medium
<b>RAILROADED</b>	
Not Railroaded	



<b>WIDTH</b>	<b>VERTICAL REPEAT</b>	<b>HORIZONTAL REPEAT</b>	<b>CONTENT</b>
53.00 in (134.62 cm)	3.74 in (9.50 cm)	4.56 in (11.58 cm)	60% Cotton, 28% Viscose, 12% Linen
<b>BACKING</b>	<b>FIRE CODES</b>	<b>DOUBLE RUBS</b>	<b>PRODUCT NUMBER</b>
	UFAC Class I / NFPA 260	Exceeds 27,000 Double Rubs (Wyzenbeek Method)	5364408
<b>DATE BOOKED</b>	<b>COUNTRY</b>	<b>CLEANING CODES</b>	
08/2014	Italy	S	

**ADDITIONAL PRODUCT NOTES**

Exclusive Pattern