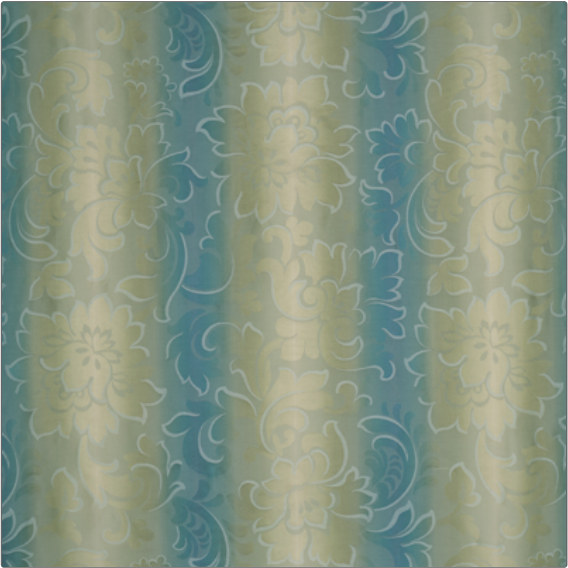


Fabric Product Details

| | |
|---------|-----------|
| PATTERN | Bel'ombre |
| COLOR | Sky |

| | |
|-------------------------|------------------|
| BRAND | APPLICATION |
| Vervain | Fabric |
| CATEGORIES | COLORS |
| Silk | Blue, Light Blue |
| DESIGN TYPES | SCALE |
| Floral, Stripes, Damask | Large |
| RAILOADED | |
| Not Railroaded | |



| | | | |
|----------------------|-------------------------------|---|---------------------|
| WIDTH | VERTICAL REPEAT | HORIZONTAL REPEAT | CONTENT |
| 61.00 in (154.94 cm) | 39.00 in (99.06 cm) | 29.20 in (74.17 cm) | 66% Cotton 34% Silk |
| BACKING | FIRE CODES | DOUBLE RUBS | PRODUCT NUMBER |
| | UFAC Class I, Passes NFPA 260 | Exceeds 18,000 Double Rubs (Wyzenbeek Method) | 0540201 |
| COUNTRY | CLEANING CODES | | |
| Italy | S | | |

| |
|--|
| ADDITIONAL PRODUCT NOTES |
| Exclusive Pattern, Refer To Image Under Sample |