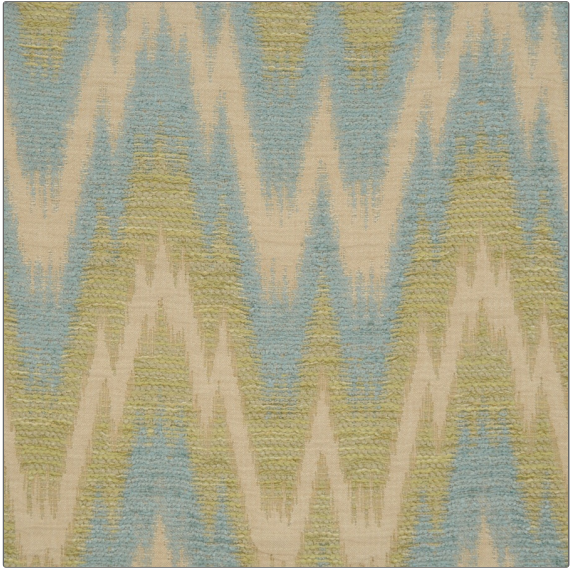


# Fabric Product Details

**PATTERN** Rutland  
**COLOR** Aquaglace



|                                 |                       |
|---------------------------------|-----------------------|
| <b>BRAND</b>                    | <b>APPLICATION</b>    |
| Vervain                         | Fabric                |
| <b>CATEGORIES</b>               | <b>BOOK</b>           |
| Wovens, Chenille                | Vervain One Green One |
| <b>COLORS</b>                   | <b>DESIGN TYPES</b>   |
| Beige, Aqua / Teal, Light Green | Flamestitch           |
| <b>SCALE</b>                    | <b>RAILROADED</b>     |
| Medium                          | Not Railroaded        |

|                      |                        |   |                               |
|----------------------|------------------------|---|-------------------------------|
| <b>WIDTH</b>         | <b>VERTICAL REPEAT</b> | <b>HORIZONTAL REPEAT</b>                      | <b>CONTENT</b>                |
| 52.00 in (132.08 cm) | 11.50 in (29.21 cm)    | 6.50 in (16.51 cm)                            | 73% Rayon 26% Cotton 1% Nylon |
| <b>BACKING</b>       | <b>FIRE CODES</b>      | <b>DOUBLE RUBS</b>                            | <b>PRODUCT NUMBER</b>         |
| 100% Acrylic Backing | UFAC Class I           | Exceeds 30,000 Double Rubs (Wyzenbeek Method) | 0558006                       |
| <b>DATE BOOKED</b>   | <b>COUNTRY</b>         | <b>CLEANING CODES</b>                         |                               |
| 07/2007              | USA                    | S   |                               |

**ADDITIONAL PRODUCT NOTES**

100% Acrylic Backing, Exclusive Pattern, Washed Fabrics May Vary In, Width, Repeat And Color.