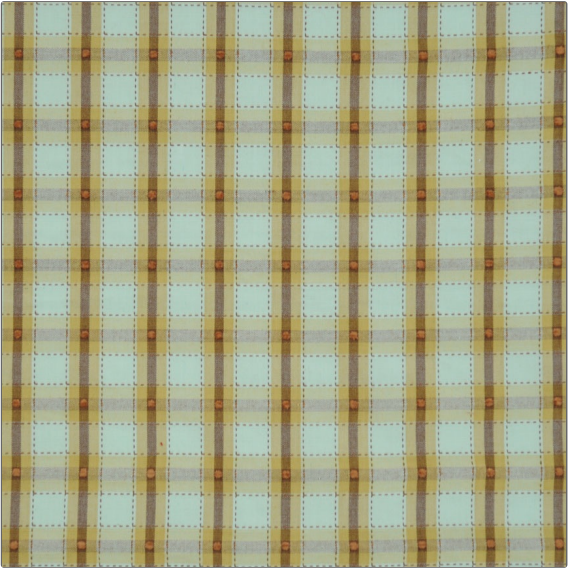


Fabric Product Details

PATTERN **Coventry**
COLOR **01**



BRAND	APPLICATION
Vervain	Fabric
CATEGORIES	COLORS
Wovens, Chenille	Aqua / Teal, Light Green
DESIGN TYPES	RAILROADED
Small Scale Woven, Check / Plaid	Not Railroaded

WIDTH	VERTICAL REPEAT	HORIZONTAL REPEAT	CONTENT
54.00 in (137.16 cm)	1.50 in (3.81 cm)	1.20 in (3.05 cm)	70% Cotton 30% Rayon
BACKING	FIRE CODES	DOUBLE RUBS	PRODUCT NUMBER
	UFAC Class I, Passes NFPA 260	Exceeds 6,000 Double Rubs (Wyzenbeek Method)	0559301
COUNTRY	CLEANING CODES		
India	S		

ADDITIONAL PRODUCT NOTES

Exclusive Pattern