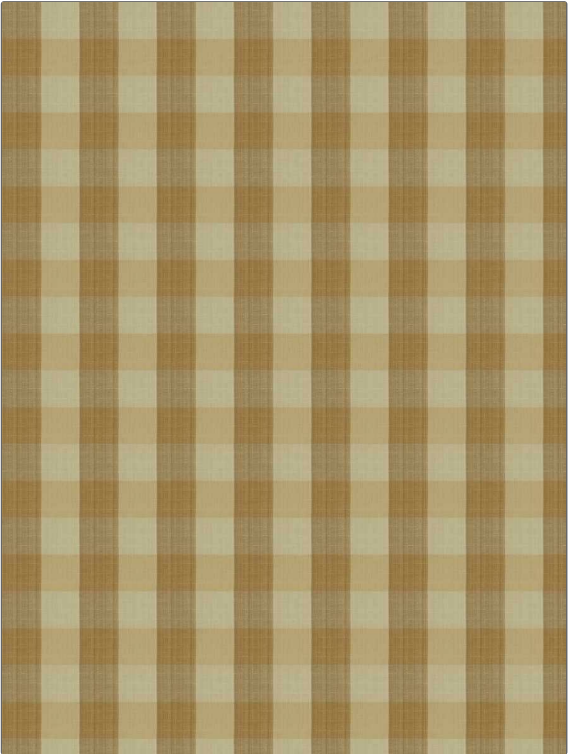


Fabric Product Details

|         |                    |
|---------|--------------------|
| PATTERN | <b>Biron Check</b> |
| COLOR   | <b>Soft Gold</b>   |

|   |             |
|---|-------------|
| BRAND   | APPLICATION |
| Vervain                                       | Fabric      |
| USES  | CATEGORIES  |
| Bedding, Drapery,<br>Multipurpose, Upholstery | Wovens      |
| BOOK  | COLORS      |
| Charles Faudree Cranberry                     | Gold        |
| DESIGN TYPES                                  | SCALE       |
| Check / Plaid                                 | Small       |
| RAILROADED                                    |             |
| Not Railroaded                                |             |



|                      |                               |   |                |
|----------------------|-------------------------------|---|----------------|
| WIDTH                | VERTICAL REPEAT               | HORIZONTAL REPEAT                             | CONTENT        |
| 54.00 in (137.16 cm) | 3.70 in (9.40 cm)             | 3.70 in (9.40 cm)                             | 100% Cotton    |
| BACKING              | FIRE CODES                    | DOUBLE RUBS                                   | PRODUCT NUMBER |
|                      | UFAC Class I, Passes NFPA 260 | Exceeds 24,000 Double Rubs (Wyzenbeek Method) | 0566010        |
| DATE BOOKED          | COUNTRY                       | CLEANING CODES                                |                |
| 09/2008              | India                         | S   |                |

|  |
|--|
| ADDITIONAL PRODUCT NOTES   |
| Exclusive Pattern, Handloomed Fabrics Are Not, Guaranteed For Precise Color, Matching. Cutting From, Current Stock Is Advised., All Quoted Repeats Are, Approximate. |