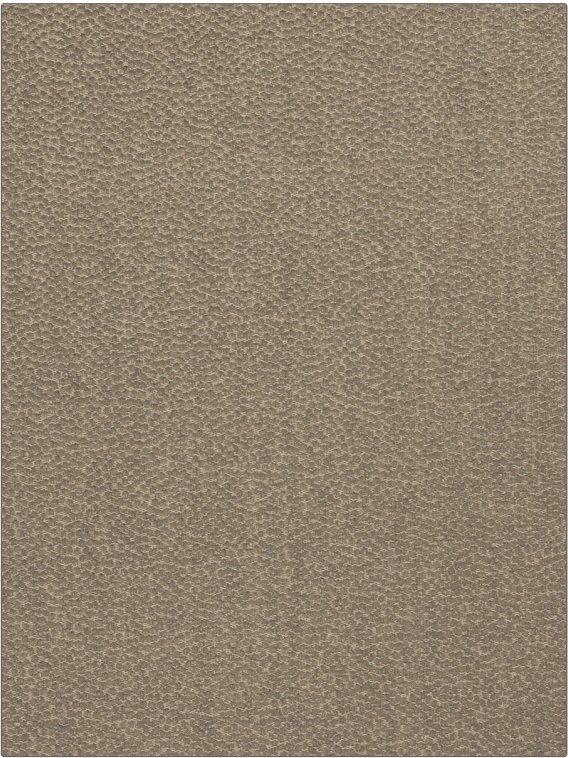


Fabric Product Details

PATTERN	Pea Gravel
COLOR	Trough Grey

BRAND	APPLICATION
Vervain	Fabric
USES	CATEGORIES
Upholstery	Wovens, Solids / Small Scale Patterns
BOOK	COLORS
Barry Dixon Collection 2014 Barry Dixon Spring 2015	Grey
DESIGN TYPES	RAILROADED
Small Scale Woven, Solid, Texture Plain	Not Railroaded



WIDTH	VERTICAL REPEAT	HORIZONTAL REPEAT	CONTENT
55.00 in (139.70 cm)	0.00 in (0.00 cm)	0.00 in (0.00 cm)	43% Viscose, 35% Cotton, 12% Acrylic, 10% Linen
BACKING	FIRE CODES	DOUBLE RUBS	PRODUCT NUMBER
	UFAC Class I / NFPA 260	Exceeds 27,000 Double Rubs (Wyzenbeek Method)	5760403
DATE BOOKED	COUNTRY	CLEANING CODES	
08/2014	Italy	S	

ADDITIONAL PRODUCT NOTES
Exclusive Pattern