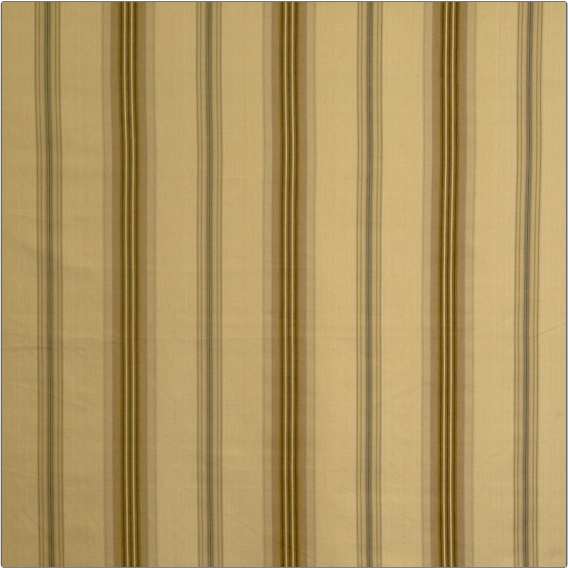


# Fabric Product Details

**PATTERN** Bonaparte Stripe  
**COLOR** Reed



<b>BRAND</b>	<b>APPLICATION</b>
Vervain	Fabric
<b>CATEGORIES</b>	<b>BOOK</b>
Wovens	Charles Faudree Mineral
<b>COLORS</b>	<b>DESIGN TYPES</b>
Brown, Light Green	Stripes
<b>SCALE</b>	<b>RAILROADED</b>
Medium	Not Railroaded

<b>WIDTH</b>	<b>VERTICAL REPEAT</b>	<b>HORIZONTAL REPEAT</b>	<b>CONTENT</b>
54.00 in (137.16 cm)	0.00 in (0.00 cm)	8.60 in (21.84 cm)	65% Cotton 35% Rayon
<b>BACKING</b>	<b>FIRE CODES</b>	<b>DOUBLE RUBS</b>	<b>PRODUCT NUMBER</b>
	UFAC Class I, Passes NFPA 260	Exceeds 9,000 Double Rubs (Wyzenbeek Method)	0577601
<b>DATE BOOKED</b>	<b>COUNTRY</b>	<b>CLEANING CODES</b>	
09/2008	India	S	

**ADDITIONAL PRODUCT NOTES**

Exclusive Pattern