

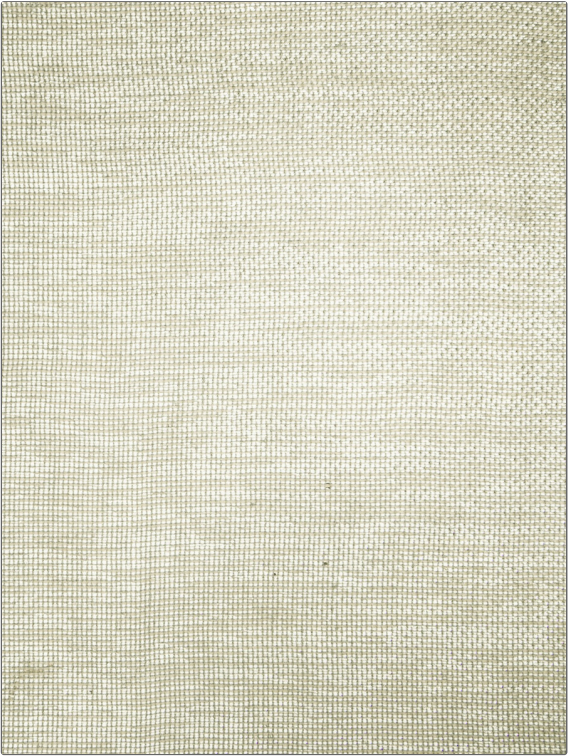
Fabric Product Details

PATTERN **Amory**  
COLOR **Sterling**

BRAND **Vervain** APPLICATION **Fabric**

CATEGORIES **Sheer, Linen** COLORS **Grey, Beige**

DESIGN TYPES **Check / Plaid, Texture Plain** RAILROADED **Not Railroaded**



WIDTH	VERTICAL REPEAT	HORIZONTAL REPEAT	CONTENT
<b>50.00 in (127.00 cm)</b>	<b>0.00 in (0.00 cm)</b>	<b>0.00 in (0.00 cm)</b>	<b>49% Linen, 31% Cotton, 20% Viscose</b>
BACKING	FIRE CODES	PRODUCT NUMBER	COUNTRY
	<b>UFAC Class II, Passes NFPA 260</b>	<b>6977601</b>	<b>USA</b>
CLEANING CODES			
<b>S</b>			

ADDITIONAL PRODUCT NOTES  
**Exclusive Pattern**