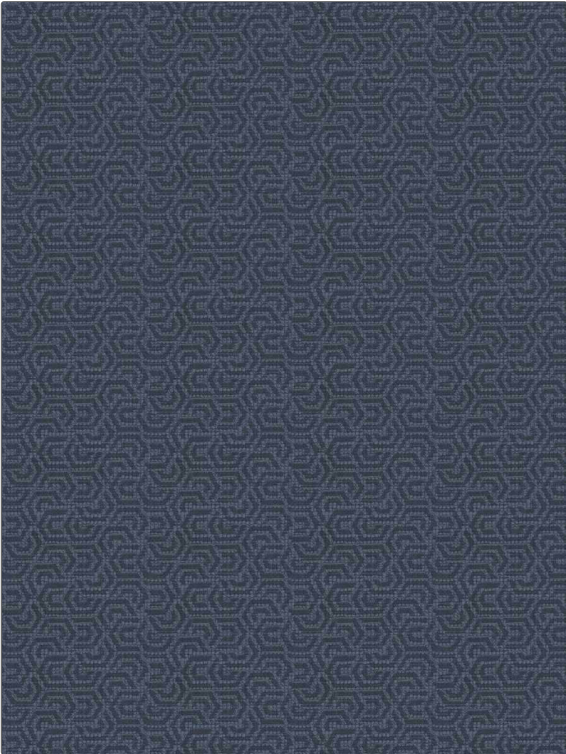


Fabric Product Details

PATTERN **Quanto**
COLOR **03**

BRAND	APPLICATION
Vervain	Fabric
USES	CATEGORIES
Upholstery	Wovens, Chenille
COLORS	DESIGN TYPES
Blue	Geometric
SCALE	RAILROADED
Small	Not Railroaded



WIDTH	VERTICAL REPEAT	HORIZONTAL REPEAT	CONTENT
54.00 in (137.16 cm)	3.50 in (8.89 cm)	6.90 in (17.53 cm)	38% Viscose, 32% Linen, 28% Cotton, 2% Polyester
BACKING	FIRE CODES	DOUBLE RUBS	PRODUCT NUMBER
	UFAC Class I / NFPA 260	Exceeds 42,000 Double Rubs (Wyzenbeek Method)	8383903
COUNTRY	CLEANING CODES		
Italy	S		

ADDITIONAL PRODUCT NOTES

Passes 30,000 Martindale Tst, Exclusive Pattern